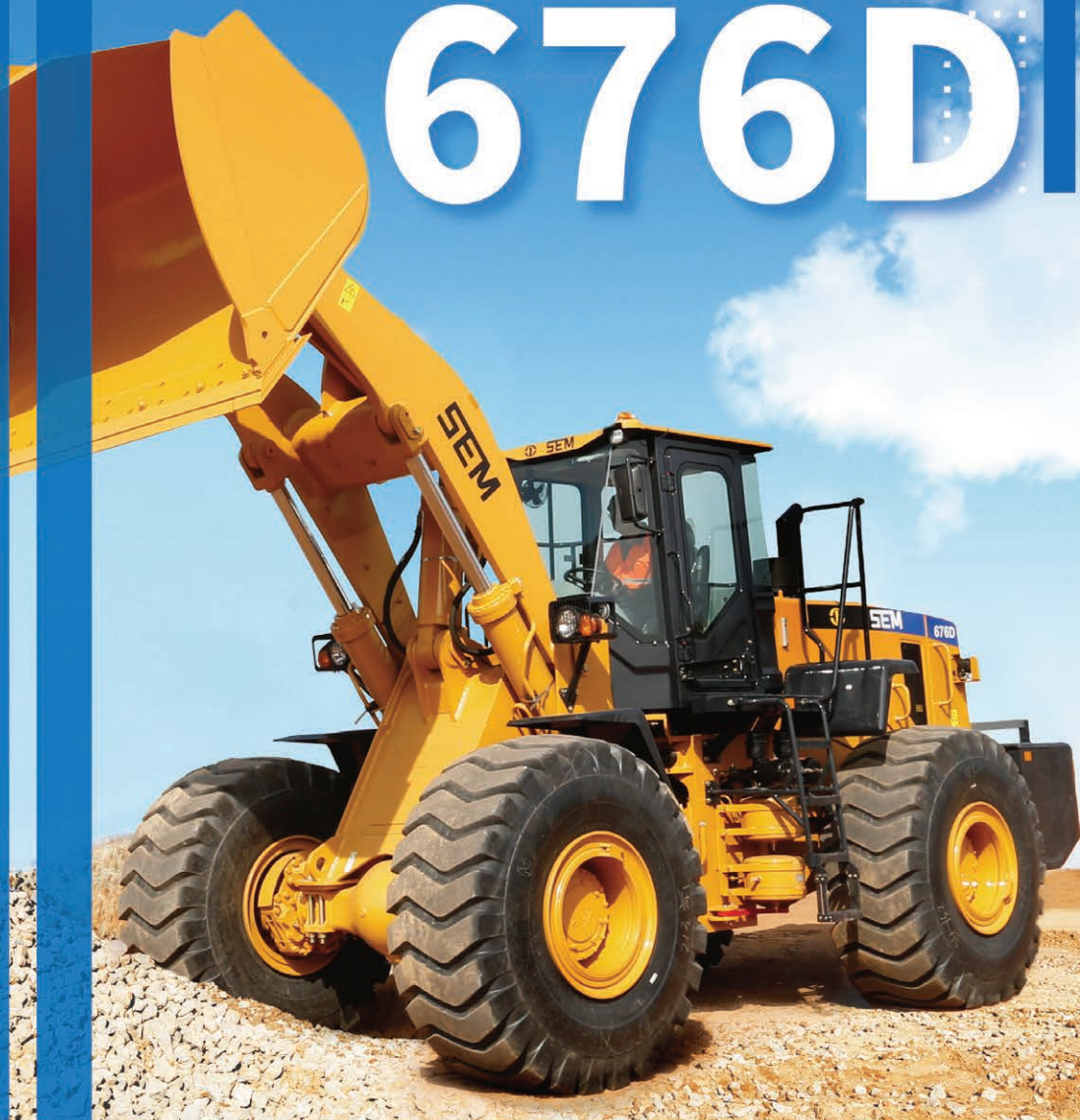


SEM Machinery Wheel Loader

SEM 676D



A Caterpillar Brand



PT TRI SWARDANA UTAMA
Gedung TMT 1, 1st Floor,
Jl. Cikandak KKO No.1
Jakarta - Indonesia
Telephone +62-21 2997 6677
www.tsu.co.id
CALL CENTER
a member of Trakindo Utama

1 Easy to Operate

- FNR (Forward-Neutral- Reverse) controller and KD (Kick Down) button integrated on pilot control, which makes operation easier.
- 2nd-4th automatic gearshift and E-control automatic leveling function improve operating efficiency and comfort.
- World-class large displacement coaxial flow steering unit for better maneuverability.
- Large interior space and excellent visibility on the integrally molded cab, and fresh air pressurization function for improved ventilation.

2 Low Operation Cost

- Weichai Stage III engine and 2 adjustable power modes to meet different application needs.
- Single load sensing hydraulic system supplies flow and pressure only when required, which saves fuel by 8%-12%.
- Performance series bucket loads more and makes it easier to dig into the pile, therefore reducing fuel consumption.
- Oil supplies separately for transmission and torque convertor by Caterpillar split pump technology, resulting in 6% savings in fuel.



3 Proven Reliability

- Highly reliable Caterpillar designed and manufactured electrohydraulic control transmission.
- Smooth gearshift and self-protection function ensures durability of transmission.
- SEM customized Weichai engine delivers optimal power and productivity.

Ease of Maintenance

4

- Centralized lubrication points and optional automatic lubrication system to reduce maintenance time.
- Pressure test ports for improved diagnosis and oil sampling.
- Long-span articulation design ensures ease of maintenance without additional space requirement on site.
- Simple and reliable powertrain design to ensure low customer O&O (Own & Operation) cost.
- Wide angle engine hood for easy access to maintenance and service points.
- 330L super-large fuel tank extends operating hours before refueling.



Operational Safety

5

- Gear lock ensures that machine can only be started when it is in neutral.
- Dual-circuit brake system and optional brake dryer to improve machine safety.
- Three-point contact design when entering or exiting the equipment.
- Maintenance-free battery, backup alarm and beacon light to ensure operator's safety.
- Six front and four rear brake calipers for excellent braking performance and reduce risk of overheating.
- Optional rear camera for enhanced visibility.

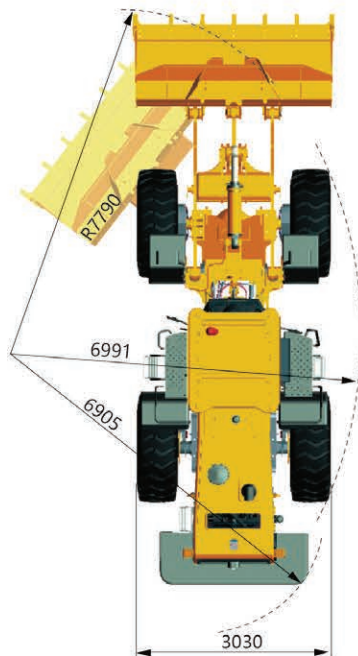
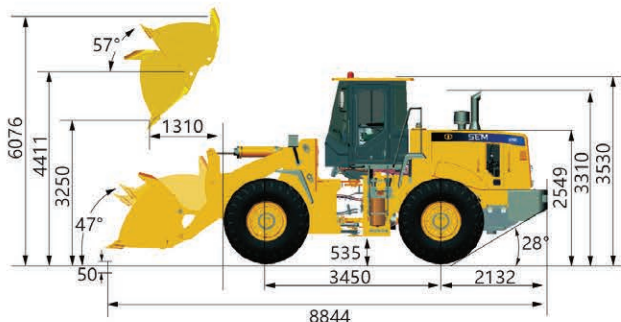


SEM 676D

EMPOWER YOUR SUCCESS™

Specifications		
Rated Load	kg	7,000
Operating Weight	kg	23,000
Bucket Capacity	m ³	4.2-7.0
Wheelbase	mm	3,450
Length	mm	8,840
Width	mm	3,260
Height	mm	3,530
Breakout Force	kN	215
Drawbar Pull Force	kN	208
Dump Clearance	mm	3,250
Dump Reach	mm	1,310
Model	-	Weichai WP10G270
Rated Power	kW	199
Rated Speed	r/min	2,200
Transmission Type	-	EH Control
Transmission Gear	-	F4/R3
Implement Control Type	-	Pilot Control
Hydraulic Cycle Time	-	9.8
Service Brake	-	Dry & Caliper, Air to Oil Control
Parking Brake	-	Drum Type Shoe Brake
Steering Angle (Lift/Right)	°	35
Minimum Turning Radius Over Bucket	mm	7,790
Size	-	26.5-25
Type	-	Bias
Layer	-	24
Textured Type	-	L3/E3

Dimensions



Scan the QR code to visit SEM YouTube Account



Caterpillar (Qingzhou) Ltd. Address: No. 12999 Nanhuan Road, Qingzhou City, Shandong Province, Zip Code: 262500, P.R.China

©2022 Caterpillar (Qingzhou) Ltd. All Rights Reserved. 山工机械, SEM, SEM Logo, their respective logos, trade dress as well as corporate and product identity used herein, are trademarks of Caterpillar (Qingzhou) Ltd. and may not be used without permission.

Materials and specifications are subject to change without notice. Featured machines in photos may include optional equipment. Contact your SEM dealer for available options.

Version: May 2022