

Key Applications

SEM510 and SEM512 SCOM are widely used in road work, sub-base, parking lots, site development, water and sewer trench work, hills and uneven terrain



Cab & Operation System

- Canopy standard, Cabin + A/C optional
- Big room, superior front, side and rear visibility
- SEM512/510 is hydrostatic compactor. The operation system is very simple, it just has two control levers, one for throttle control, another one is for forward/backward and brake control
- A/C with interior cycle/out side fresh air cycle selection for better defog capability
- Safety belt is standard



Optional Accessories

Configuration (O=Optional)	SEM510	SEM512
Soft CAB+AC	O	O
Compaction meter	O	O
Cold Start (Air Inlet Heater, -20C)	O	O
Rear rain wiper(Cab Only)	O	O
Radio (AM, FM) (Cab Only)	O	O
Pad Foot Shell Kit	O	O

Specifications

Items	Unit	SEM510	SEM512
Engine Specification			
Emission		China Stagell	China Stagell
Std Rated Power-Gross	kW	97.5	97.5
Rated Speed	r/min	2,200	2,200
Composite Work Cycle Fuel Consumption (l/hour)	N.m/rpm	560/1,400-1,600	560/1,400-1,600
Ambient Capability-STD Sea Level	Deg C		
Ambient Capability-HA Sea Level	Deg C	49	49
Ambient Capability-Cold Weather	Deg C	-10	-10
Operating Specifications			
Machine Mass w/Std Config	kg	10,000+3%	12,000+3%
Weight at Drum w/Std Config	kg	5,900+3%	6,900+3%
Weight on Rear Axle	kg	4,100	5,100
Static Linear Load	N/cm	217	317
Max. Grade Ability w/o vibration	%	45	45
Articulated Angle	°	33±1	33±1
Turning Radius Inside Drum Edge	mm	5,990	5,990
Compaction Width	mm	2,130	2,130
Travel Speed			
Lo Range	km/h	0 to 5.5	0 to 5.5
Hi Range	km/h	0 to 12	0 to 12
Hydraulic Cycle Time			
Full Turn Time	s	6±0.5	6±0.5
Vibratory System			
Frequency-Hi/Lo	HZ	33/30	33/30
Amplitude-Hi/Lo	mm	0.90/1.80	0.90/1.80
Centrifugal Force-Hi/Lo	kN	130/215	150/245
Dimensions			
Machine Dimensions[L*W*H]	mm	5,815*2,290*3,130	5,815*2,290*3,130
Oscillation Angle	°	10±1	10±1
Wheelbase	mm	2,900	2,900
Tread Width	mm	1,600	1,600
Drum Width	mm	2,130	2,130
Drum Diameter	mm	1,590	1,600
Tire Specs			
Tire Pressure Setting	Mpa	0.35	0.35

Caterpillar (Qingzhou) Ltd. Address: No.12999 Nanhuan Road,Caterpillar Industrial Park, Qingzhou City,Shandong Province, Zip Code: 262500 P.R.China

© Materials and specifications are subject to change without notice. Featured machines in photos may include optional equipment. See your SEM dealer for available options.

© 2017 Caterpillar (Qingzhou) Ltd. All Rights Reserved. SEM Machinery, SEM, their respective logos, trade dress as well as corporate and product identity used herein, are trademarks of Caterpillar (Qingzhou) Ltd. and may not be used without permission.

Version: November 2017

SEM510/512 Soil Compactor



※ Featured machines in photos may include optional equipment

SEM510 SEM512

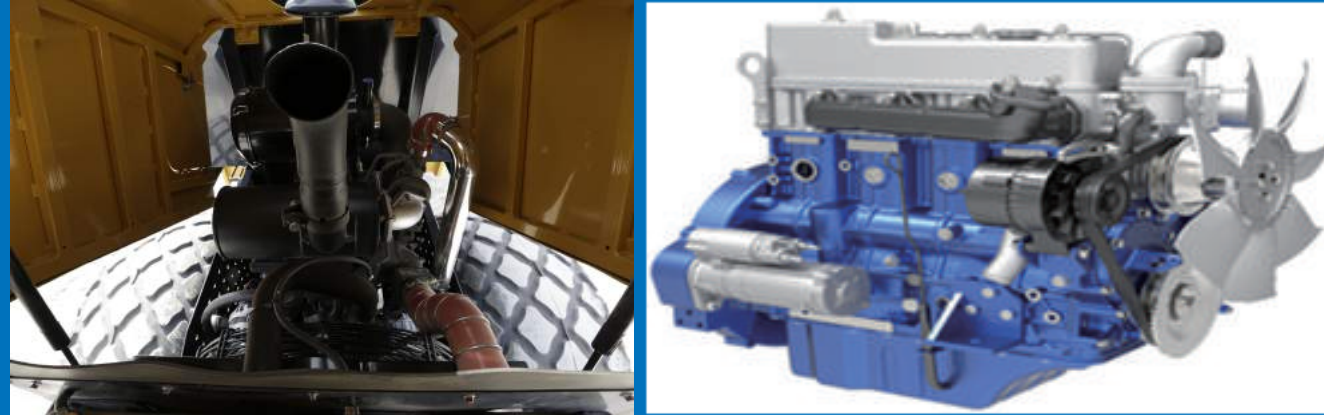
- **High Reliability:** Hydrostatic drive system with world class variable displacement piston pump and motors delivers leading in class reliability
- **High Productivity:** Dual amplitude and frequency vibration system enable the operator to achieve better compaction result
- **High Efficiency:** Up to 45% grade ability allows the machine to work efficiently on slop and uneven terrains

Website <http://www.semmachinery.com>


A Caterpillar Brand

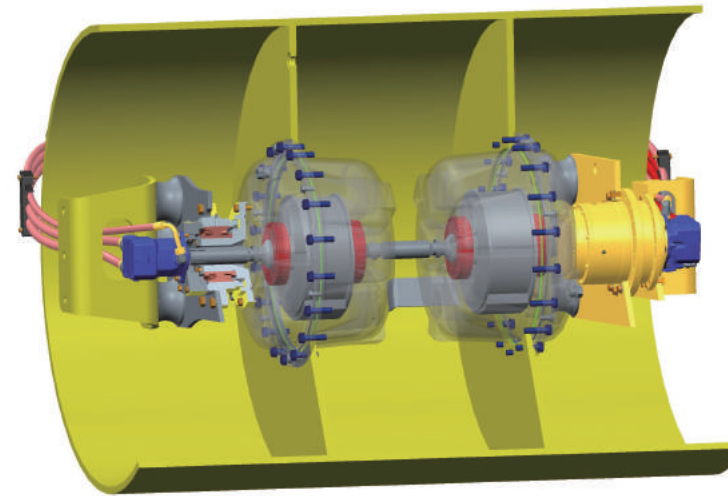
Engine

- Weichai WP4 engine with turbo charger and ATAAC
- High fuel efficiency



Vibration System

- Pod-style eccentric design
- Dual amplitude and frequency with world class piston pump and motor



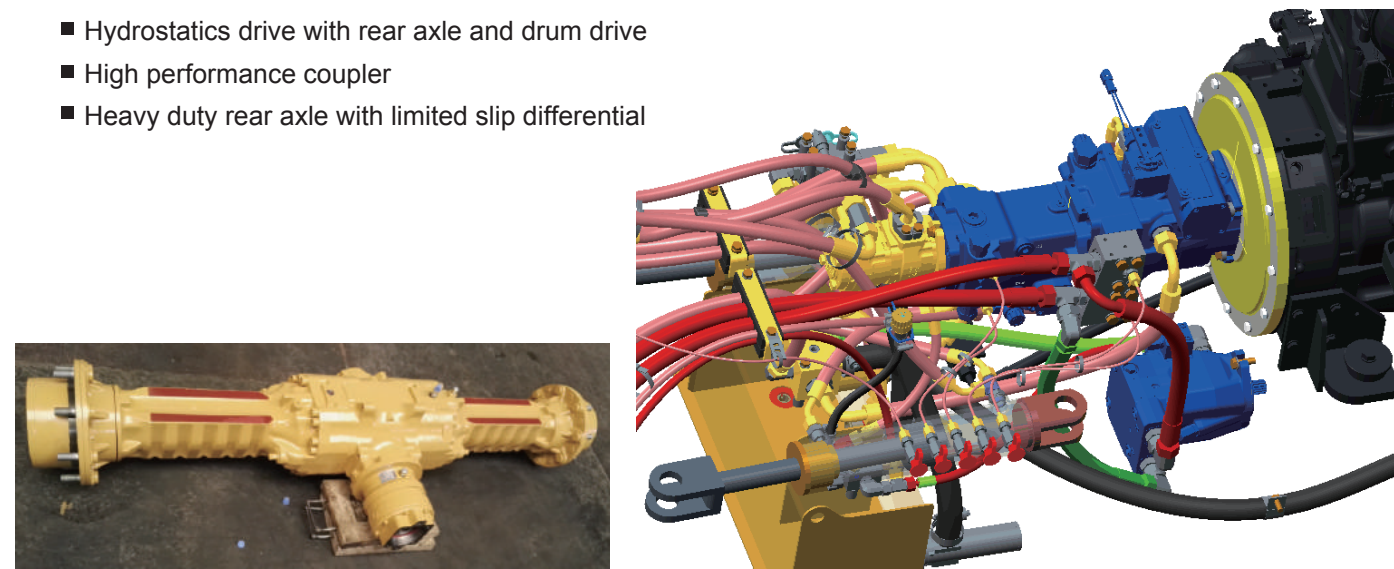
Hydraulic System

- Improves efficiency by 20% vs. open center system
- Reduces oil contamination, extends life of hydraulic system
- Maintains higher system pressure with less energy loss
- Allows for simpler hose routings
- Requires smaller volume hydraulic tank, reduces maintenance cost



Drive Train

- Hydrostatics drive with rear axle and drum drive
- High performance coupler
- Heavy duty rear axle with limited slip differential



Cat® Product Link™

Cat® Product Link™ will support your business, and accurately convey information of the equipment to relevant personnel in a timely and effective manner for your better equipment management.



Cooling System

- Modular cooling package design
- Up to 49°C ambient temperature cooling capacity

