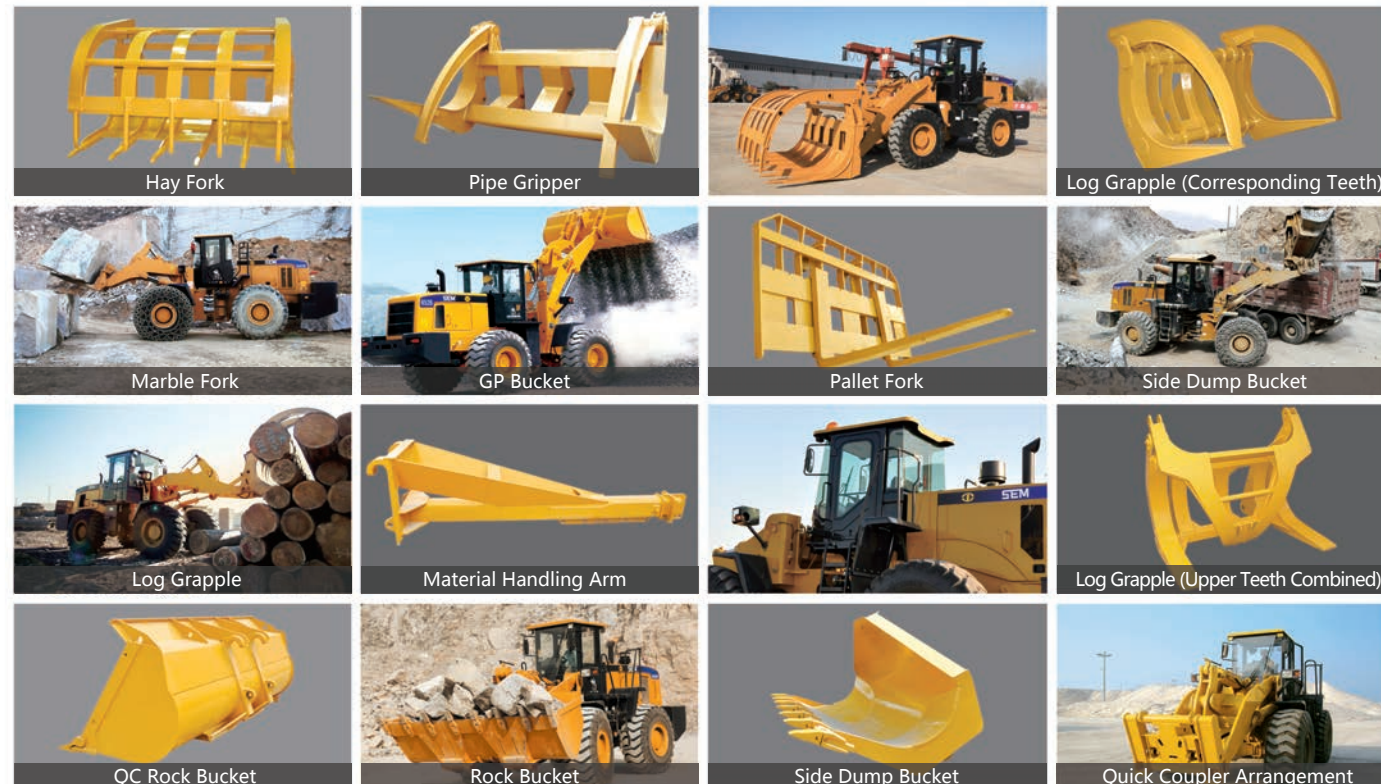


## Machine Applications

- The sturdy design of the 655D makes it the perfect machine for large volume earthmoving applications
- In Hopper feeding and Coal loading applications the 655D can load more, move faster and burn less fuel
- Multiple work tools are available for increased versatility



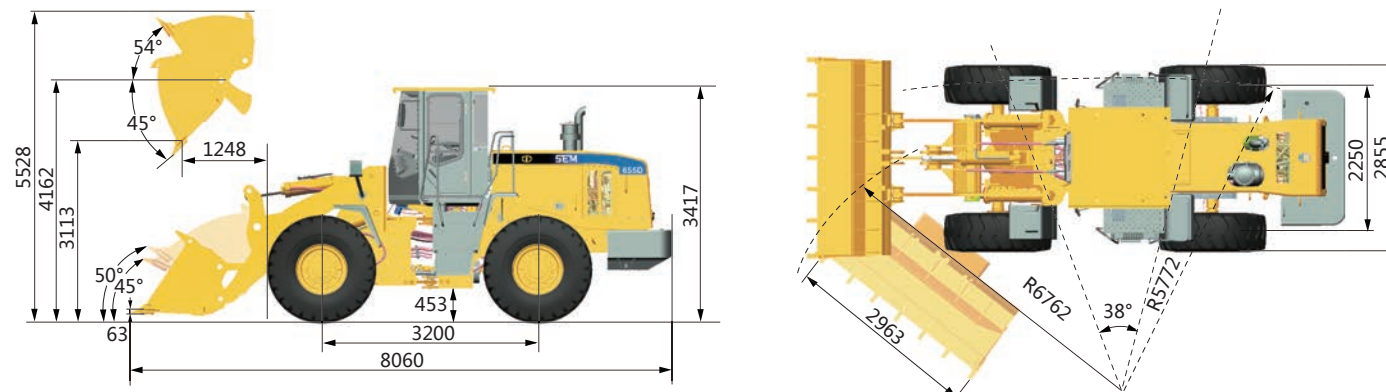
## Work Tool Options



## Main Specifications

Items		SEM655D	Items		SEM655D
<b>Main Specifications</b>			<b>Engine</b>		
Rated Load	kg	5 000	Model		WD10
Operating Weight with Standard Bucket	kg	16 550	Rated Power	kW	162
Bucket Capacity	m <sup>3</sup>	2.7-4.5	Rated Speed	r/min	2 000
Wheel Base	mm	3 200	Displacement	L	9.726
Overall Dimension (outside of tire)	mm	8 060x2 963x3 417	<b>Implement Hydraulic</b>		
<b>Operating Specifications</b>			Implement System Type		
Breakout Force (GRD)	kN	3 113	Twin pump flow merging hydraulic system		
Dump Clearance	mm	161	Boom Raise Time	s	5.13
Articulated Angle	°	38±1	Hydraulic Cycle Time (rated payload)	s	9.5
<b>Transmission</b>			System Pressure Setting		
Transmission Type		Countershaft, power shift	Mpa 17		
<b>Transmission Gears</b>			<b>Brake System</b>		
F4/R4			Service Brake		
Torque Converter Type			Dry & caliper, air to oil control		
Single stage 3 elements			Drum type shoe brake, spring applied & oil released		
<b>Maker &amp; Type</b>			<b>Steering System</b>		
SEM TR200			System Type		
Forward I/ Reverse I			Flow amplifying		
km/h 7.9/7.9			Steering Pump Type		
Forward II/ Reverse II			Gear pump		
km/h 15/15			System Pressure Setting		
Forward III/ Reverse III			Mpa 16		
km/h 24/24			Steering Angle (L/R)		
Forward IV/ Reverse IV			° 38±1		
km/h 41/41			<b>Tires</b>		
<b>Axle</b>			Size		
Main Drive Type			23.5-25		
Spiral bevel gear, single stage			Type		
Final Drive Reduction Type			Bias		
Planetary type, single stage			Layer		
Rear - Oscillating +/-			16		
° ±11			Textured Type		
			L3		

## Machine Dimensions



► Note: the above dimensions are based on the standard configuration.

### Caterpillar (Qingzhou) Ltd.

Materials and specifications are subject to change without notice. Featured machines in photos may include optional equipment. See your SEM dealer for available options.

© 2015 Caterpillar (Qingzhou) Ltd. SEM, its respective logos, trade dress as well as corporate and product identity used herein, are trademarks of Caterpillar (Qingzhou) Ltd. and may not be used without permission. All rights are reserved.

### DEALER NAME

Address:  
Telephone:  
Fax:  
Email:  
Website:

Dealer Logo Area

# SEM655D Wheel Loader



\* Featured machines in photos may include optional equipment

## SEM655D

### Product Advantage

- High Productivity
- Best-in-class Reliability and Durability
- Excellent Fuel Economy
- Outstanding Operator Comfort

[Http://www.semmachinery.com](http://www.semmachinery.com)



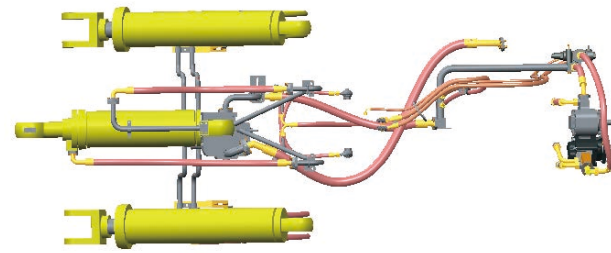
## Optimized Engine

- Low speed engine with E-fan provides increased operating efficiency
- Enhanced fuel pre-filter eliminates water and contaminant from fuel for best fuel system protection
- The air cleaner provides machine reliability even in the most severe applications



## Efficient Hydraulic System

- Twin pump flow merging hydraulic system increases machine efficiency
- Load sensing full hydraulic steering
- The optimized hydraulic system paired with the drive train reduces machine cycle time and increases productivity
- Joystick hydraulic control for easy and precise operation



## Operator Station

- Premium operator station with increased space and superior visibility
- Patented MAC mount provides less noise and increased comfort
- Adjustable suspension seat
- Sliding side window and AC with fresh air circulation provide operator comfort
- Single lever shifting is flexible and convenient
- Adjustable air flow outlet delivers better defrost performance



## Reliable Drivetrain

- Countershaft transmission with upgraded core components provides high reliability
- Large rim-pull in 1st gear and higher speed in 2nd gear provide high efficiency for load and carry applications
- Clutch cutoff selection switch ensures stable and safe operation
- Torque converter structure is simple and efficiency is high
- The SEM designed and built axle provides best in class performance in heavy duty applications



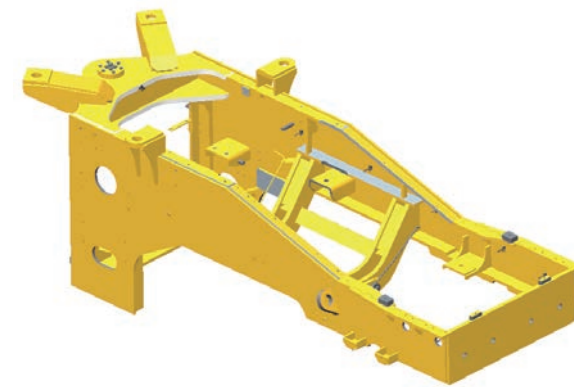
## Advanced Cooling System

- The standard cooling package provides high reliability in 43 C ambient conditions. An optional package is available for 50 C ambient conditions
- Shock pad mounts ensure reliability under severe applications



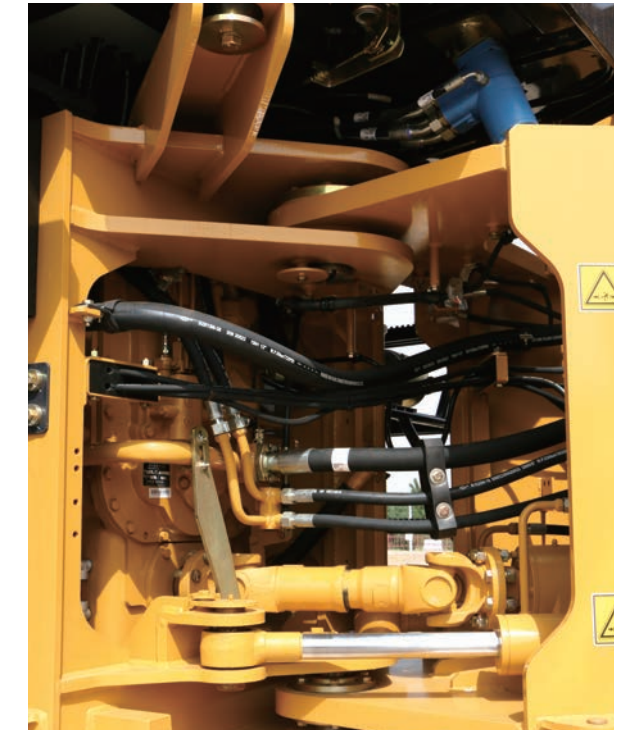
## Solid Structure

- Structures undergo Finite Element Analysis (FEA) and On Machine Stress Analysis (OMSA) to ensure durability
- Performance Series (PS) buckets improve loading capability



## Serviceability

- System pressure test ports are standard
- Engine hood grill opens for easy service access
- Torque converter is isolated from transmission making it easy to service



## Safety

- Safety design complies with all regulatory requirements
- Caterpillar Production System (CPS) leveraged in manufacturing process
- 3-point touching design provides convenient operator entering to cabin
- Backup alarm ensures machine safety
- Environmentally friendly painting process

